



2021-2022 Annual Report



LETTER FROM THE PRESIDENT



At the Mapleton Education Foundation, we believe the basic difference between those who achieve greatness and those who might have been great is one thing: opportunity. Our mission is to nurture the greatness in every student by affording opportunities and resources to turn dreams into reality. Through generous donations, we provide financial support and a variety of grants to students and teachers to help them explore, experience and elevate their lives to full potential. In addition, we provide student access to post-secondary education, enable student participation in competitive programs, foster teacher creativity and innovation in the classroom, and engage community support to fulfill this commitment to future generations. Thanks to supporters like you, the Foundation remains a relevant and critical support system to our Mapleton community. We hosted our 17th annual Gala, "Opportunities Beyond Imagination!", where 228 community members gathered for an evening of celebration and resolve to continue funding the programs that help make Mapleton so unique. We raised \$80,400 for the purchase of Imagination Playgrounds to encourage creativity and imagination in our youngest learners. We raised funds to later award \$221,000 in post-secondary scholarships to 34 very deserving students. Scholarships ranged from \$1,500 to \$20,000 per student, affording them the opportunity to pursue dreams without a big financial burden. The scholarship recipients are headed off to construction management, welding programs, engineering, and science programs.

The gala helped to provide \$17,000 in teacher grant support to allow our Mapleton teachers the creativity and freedom to teach beyond the classroom walls. These grants help our teachers and students explore the curriculum in a hands-on and experimental way. Our Marchi Mini-Grant program benefitted over 1,300 students.

"Our mission is to nurture the greatness in every student by affording opportunities and supplying necessary resources to turn dreams into reality."

The Mapleton Education Board voted on two new programs to complement our existing support. Our Mapleton Holiday Shop and Giving Drive event invited 70+ families to select gifts, providing gifts to over 200 children this past holiday season. Families were able to shop in our pop-up toy store for new gifts that were wrapped by volunteers while kids decorated cookies and made holiday crafts. The Mapleton Education Foundation, in partnership with Mapleton Public Schools, established the Mapleton Legacy Association to expand communications with former students and friends of the school district. The goal of the Legacy Association is to reach across schools and across years of alumni, staff and friends to inform and engage with each other the exciting work of Mapleton Public Schools. The Association also provides opportunities to reconnect and network with former classmates, teachers, and schools. The First Annual MEF Legacy Association TopGolf Event was attended by 63 participants from across our community. Lastly, we would like to express sincere gratitude for those partners who have been with us for years, as well as those who joined us this past year. As we continue to evolve and grow, our partnerships become deeper and more varied. We truly could not do this work without you, and the Foundation, as well as Mapleton students, are forever grateful. Our community is unique and eclectic, with deep roots in tradition while constantly embracing change. The Mapleton Education Foundation continues to celebrate and honor all that Mapleton is, and looks forward to supporting all it will continue to become.

Thomas Hernandez
President, Board of Directors

THE YEAR IN REVIEW



\$221,000

In post-secondary scholarships

Awarded scholarships to



34 STUDENTS

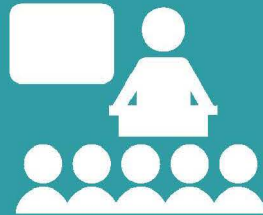
The vast majority of whom are the first in their family to attend college.

800+ backpacks stuffed with school supplies distributed

5th Annual Wolverine Welcome Back

Supported unique in-class learning experience for

8 TEACHERS



ultimately impacting

1,300 STUDENTS

through the Marchi Mini-Grant program.



Hosted our first annual Mapleton Holiday Shop and Giving Drive providing gifts to over 200 children.

Continued our partnership with Adams County Education Consortium



\$120,000

in new scholarship funds for Mapleton Students.



Hosted our 17th Annual Mapleton Education Foundation Gala

raising over

\$ 141,999

and hosting



Legacy Association 1st Annual TopGolf Event

63 participants attended to connect with community, and helped to raise \$4,500 for the Legacy Scholarship Fund.

NEW THINGS AT THE FOUNDATION



The Mapleton Holiday Shop and Giving Drive

We are so thrilled that our first annual Mapleton Holiday Shop and Giving Drive provided gifts to over 200 children this past holiday season! 50 volunteers came together to donate toys, coats, and hygiene kits. Families were able to shop in our pop-up toy store for new gifts that were wrapped by volunteers while kiddos decorated cookies and made holiday crafts! We are so incredibly grateful to our community partners for making this event happen- because of you, the holidays were made more special for so many of our families.

The goal of the Legacy Association is to strengthen and expand our network of graduates, retirees, and friends of Mapleton Public Schools, Adams County District 1. The Association seeks to provide opportunities for friends from the past and present to re-engage in the work of the district and continue to help assure all students achieve their dreams.

The First Annual Mapleton Legacy Association TopGolf Event

The Mapleton Education Foundation, in partnership with Mapleton Public Schools, established the Mapleton Legacy Association to expand communications with former students and friends of the school district. The goal of the Legacy Association is to reach across schools and across years of alumni, staff and friends to inform and engage with each other the exciting work of Mapleton Public Schools. The Association also provides opportunities to reconnect and network with former classmates, teachers, and schools. The First Annual MEF Legacy Association TopGolf Event was attended by 63 participants from across our community raising \$4,500 to support the Legacy Scholarship, through individual and corporate support.



MARCHI MINI-GRANTS

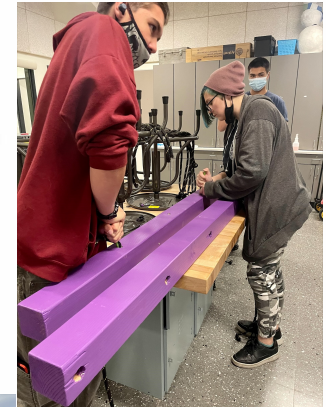
The purpose of the Marchi Mini-Grant program is to support creative educational projects that engage students, support student mastery of academic standards, and increase student achievement. The program provides up to \$1,500 per teacher or \$3,000 per multi-teacher team to implement programs which significantly enhance student learning.

Named after Lisa Marchi, a beloved Mapleton principal who passed away in 2012, the Marchi Mini-Grant program honors Lisa's commitment to students, teachers, and the joy of learning.

One of the projects was led by Sergio Pabelo, called Adventure Leadership Mobile Challenge Course. This project provided the opportunity for high school students from Big Picture College and Career Academy, Global Intermediate Academy, and Global Leadership Academy to learn and create structures that will support other Mapleton students. This project was proposed to assist in meeting the learning objectives of students in the district's Adventure Leadership Program. Students enrolled in this program receive college credit through Red Rocks Community College, learn how to facilitate adventure activities, safety and risk management protocols in various outdoor endeavors, and develop leadership skills that will assist them in any future career they choose. Students created a mobile challenge course that promoted community, trust, communication, self-confidence and enhance school culture. Eventually, this project will support thousands of Mapleton students for many years.



The Board's goal is to support inspirational, teacher-created projects by awarding \$15,000 in teacher grants each year. Each project will receive between \$1,500 and \$3,000 to support classroom enrichment activities that take the students beyond classroom walls.



SCHOLARSHIPS



This year's scholarship program was extremely successful in ensuring our graduating seniors would not have to let financial struggles keep them from pursuing their post-secondary dreams. Thanks to significant investments from new and continuing supporters, our scholarship program continues to grow at a steady pace. The program itself represents a great benefit of being a part of the Mapleton community. We were able to award **34 scholarships** from the Foundation, for a total of **\$221,000**, to join the other 81 continuing scholars that benefit from the generous support from individual, community, and corporate partnerships.



SCHOLAR INTRODUCTIONS

My future goals include going to college and getting a Bachelor's degree. I will be the first person, first girl, in my family to further my education. This will benefit my family because I will bring so much more to them. I will bring a degree while having their family name. This will bring them pride. It will make them ignore their own sadness of not being able to go to college. They will be able to see themselves in me and feel proud of themselves. They will no longer feel regret for not having everything they wanted. They will not feel regret for pushing me. My family will be proud of me and everyone around us when I get to college.

– **Ana Isabel Molina**
\$1,500 Music Educators Scholarship
Metropolitan State University of Denver



My main goal in life is to not necessarily be wealthy but more importantly to be happy. I want to have a career in robotic engineering where I can make something I can be proud of and look back and say, "I did that". I want to do the things I love and create a positive footprint where people say, "I want to be like him." I hope people in the community can learn from me and will be dedicated and persevere no matter what. At the end of the day, we all work hard towards our accomplishments.

– **Dominick Sanchez**
\$2,500 Building America's Future
Metropolitan State University of Denver



Within my educational journey, I have found many of my interests, along with what to look forward to. I have had the opportunity to build myself up. Life shows us what we strive to achieve from the smallest wins to the biggest. I have learned that it is okay to seek out opportunities with a helping hand. I have learned that some days the greatest achievement of our day is getting out of bed. I have learned that life isn't dependent on only inspiration or only hard work, but that life is dependent on our choices to do as much or as little as we desire. That very dependency will shape the way we view the life before us, it will shape our struggles and our prosperity. At the end of it all, I wish to shape myself and my work through my vision of this wondrous life.

– **Britney Laguna Aguirre**
\$2,000 Frank Family Scholarship
University of Colorado Boulder



Congratulations to our 2022 MEF Scholars

Aaron Corral	Adams County Scholarship	\$10,000
Alexia Tavarez	Adams County Scholarship	\$20,000
Ana Isabel Molina	Music Educators Scholarship	\$1,500
Anette De Santiago	Adams County Scholarship	\$20,000
Ari Quezada Caro	Adams County Scholarship	\$20,000
Ashley Godinez Rivera	Legacy Scholarship	\$5,000
Austin Sierra	Rising Star Scholarship	\$4,500
Brian Parra Chavez	Legacy Scholarship	\$5,000
Britney Laguna Aguirre	Frank Family Scholarship	\$2,000
Carmen Marmolejo	Adams County Scholarship	\$10,000
Charles Segura	Legacy Scholarship	\$5,000
Citlali Campos	Adams County Scholarship	\$10,000
Diego Ramirez Ortega	Ratkovich Memorial	\$1,500
Dominick Sanchez	Building America's Future Scholarship	\$2,500
Eric Alfaro	Building America's Future Scholarship	\$2,500
Heidy Rios	Alysha Chapman Scholarship	\$4,000
Jessica Smith	Legacy Scholarship	\$5,000

SCHOLAR INTRODUCTIONS



I was born in Bogota, Colombia. Due to different situations, we decided to move to the United States with my family. Before studying at MESA I was in another school where I suffered from bullying. I took all the load I had to my studies where, although I had a good academic performance, I did not feel happy. My vision for the future is to continue studying and taking advantage of the academic opportunities that the United States has given me and to be able to give back what this country has given me. Continuing my education will be a boost to achieving my goals and will give me a broader view of the world I want to know. I like to fill myself with learning since it is something I enjoy doing. The personal impact would be opening opportunities to experience new situations where I learn from them and can improve different aspects of myself.

– Sarah Sanabria Hernandez
\$2,000 Marco Olivas Scholarship
Emily Griffith Technical College



My future goals are to obtain a master's degree in library sciences so I can go on to do archiving, special collections, and record management work. Continuing my education will create a positive impact in my life because it will give me opportunities to expand my knowledge and give me a chance to interact with other like-minded students in an academically challenging environment. Archivist work keeps materials of a special nature such as rare books, manuscripts, or archives safe while still keeping them accessible. This affects the community positively as it preserves knowledge and history while still allowing others to learn.

– Lily Connelly
\$5,000 Legacy Scholarship
University of Denver



Congratulations to our 2022 MEF Scholars

Jocelyn Hernandez	Adams County Scholarship	\$10,000
Jose Dominguez	Alysha Chapman Scholarship	\$4,000
Kiana Sarai Gutierrez	Legacy Scholarship	\$5,000
Leonardo Dominguez	Back on Track Scholarship	\$5,000
Lily Connelly	Legacy Scholarship	\$5,000
Marina Boltz	Building America's Future Scholarship	\$2,500
Morgan Bardon	Legacy Scholarship	\$5,000
Nairb Nunez	Adams County Scholarship	\$10,000
Natalie Connelly	John G. Byrd Scholarship	\$5,000
Peter Cuevas	Creator/Maker Scholarship	\$2,500
Priscila Holguin Munoz	Adams County Scholarship	\$10,000
Robert Lopez	Alan T Hull Scholarship	\$2,500
Samantha Quijano	Ratkovich Memorial	\$1,500
Sarah Sanabria Hernandez	Marco Olivas Scholarship	\$2,000
Veronica Aguilar Gonzalez	Adams County Scholarship	\$10,000
Victoria Munoz	Building America's Future Scholarship	\$2,500
Yanetzy Estrada Sanchez	Adams County Scholarship	\$10,000



I come from a Mexican family where neither of my parents graduated high school and I have worked extremely hard to support the person that I am today. As an individual who will graduate from high school and will soon go to college, I will continue to grow and develop my skills as a person and student.

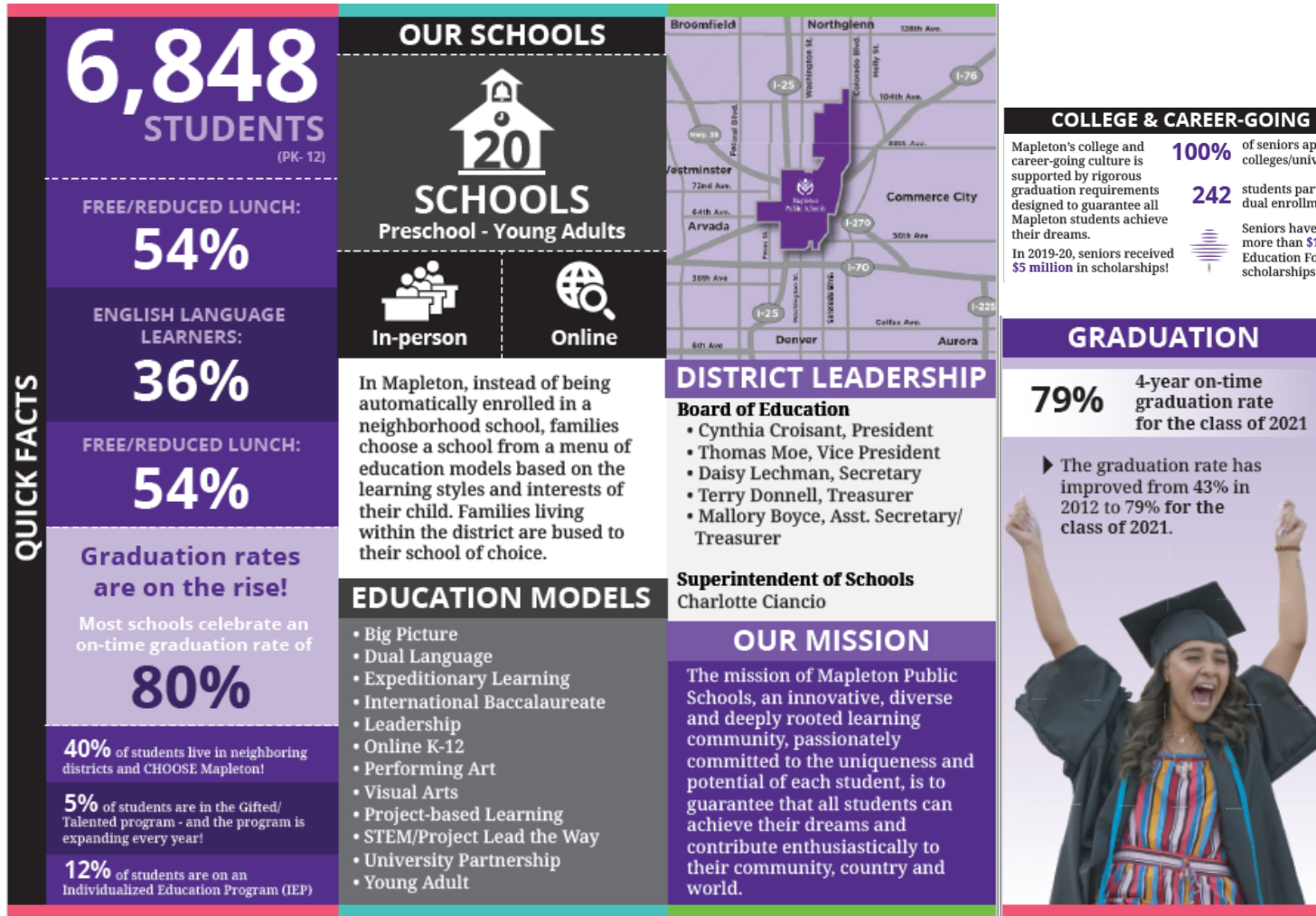
My goal is to be part of the mechanical engineering program where I can help create renewable and sustainable energy, not only in Colorado, but across the world, especially places such as Costa Rica, Honduras, and Guatemala who still rely on energy that is unsustainable like oil, natural gas, and coal.

– Jose Dominguez
\$4,000 Alysha Chapman Scholarship
Colorado School of Mines

WHO WE SUPPORT

Mapleton Public Schools 2021-22 School Year

Mapleton Public Schools Adams County District #1 serves nearly 7,000 students, grades preschool – 12, in unincorporated Adams County, Colorado. Known nationally for its reform efforts, Mapleton is committed to raising expectations by providing choices for learning and removing obstacles to guarantee all students **achieve their dreams**. Mapleton is a district of choice and offers a robust menu of schools that are small-by-design.



LOOKING FORWARD



The Foundation has played a critical role in eliminating the opportunity gap for Mapleton students for over 25 years. We continue to believe that all Mapleton students should have access to the same opportunities as their higher income peers. From summer enrichment programs, to enhanced classroom experiences, to money for college, students in the Mapleton community deserve a rich educational experience that prepares them for careers, college and life. To that end, the Mapleton Education Foundation Board has clarified areas of growth over the coming years in order to achieve a supportive and fulfilling mission for the Foundation. The overarching theme is to create more balance in each of the program areas so that the K 12 support grows a bit to match the already existing strong post-secondary support. We want to continue to seek cultural, environmental and hands-on enrichment opportunities for our students to address the needs of the whole child.

Post-secondary Access: We will continue to award between \$200,000-\$275,000 in post-secondary education scholarships to our very deserving seniors, based on both merit and need. Scholarships range in size between \$1,500 and \$20,000 and are up to 4 years of support. Helping to eliminate the financial barrier to further education.

Make a Difference: The Board's goal is to support enrichment opportunities for high-potential Mapleton students in every school. The Board will provide a total of \$5,000 in \$500 per student opportunity scholarships each year (1-5 students per school), ensuring access to life-enriching extracurricular activities.

Marchi Mini-Grants: The Board's goal is to support inspirational, teacher created projects by awarding \$15,000 in teacher grants each year. Each project will receive between \$1,500 and \$3,000 to support classroom enrichment activities that take the students beyond classroom walls.

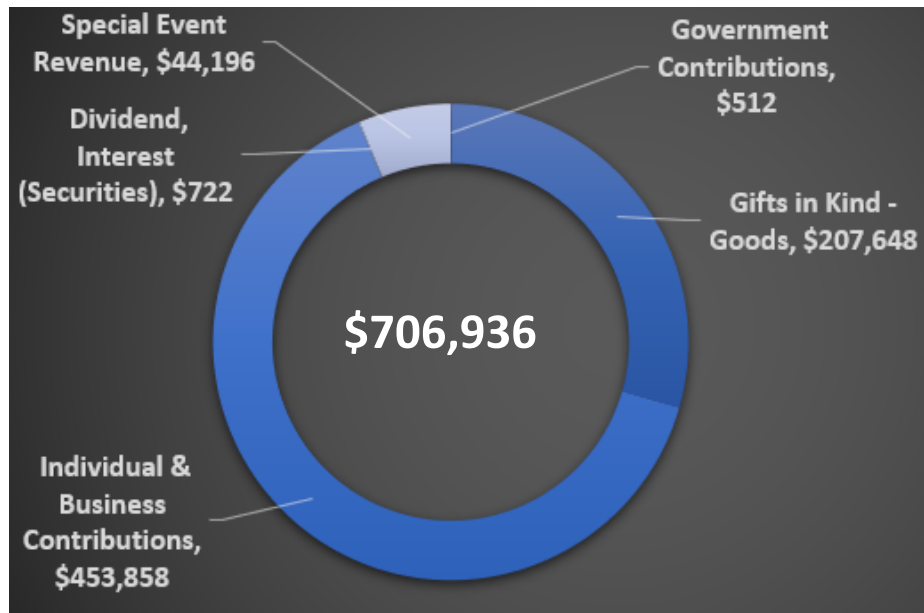
District Priority Programming: In order to ensure every Mapleton student is proficient or advanced in every core content area, the Foundation will continue its support in district priority programming from \$30,000 to \$120,000 annually to support activities that the district feels will give our Mapleton students the experiences they need for future success.

Areas of Opportunity: The Foundation maintains a very open approach to supporting our Mapleton community. As needs evolve or become identified, the Foundation would like to be flexible enough to address those needs. The Mapleton Holiday Shop and Giving Drive is an example of such support. The support needed in our Mapleton community goes beyond the walls of our schools, as we strive to holistically support students and families. The Foundation was able to host an event that provided gifts to over 200 children this past holiday season, which lifted up community spirit.

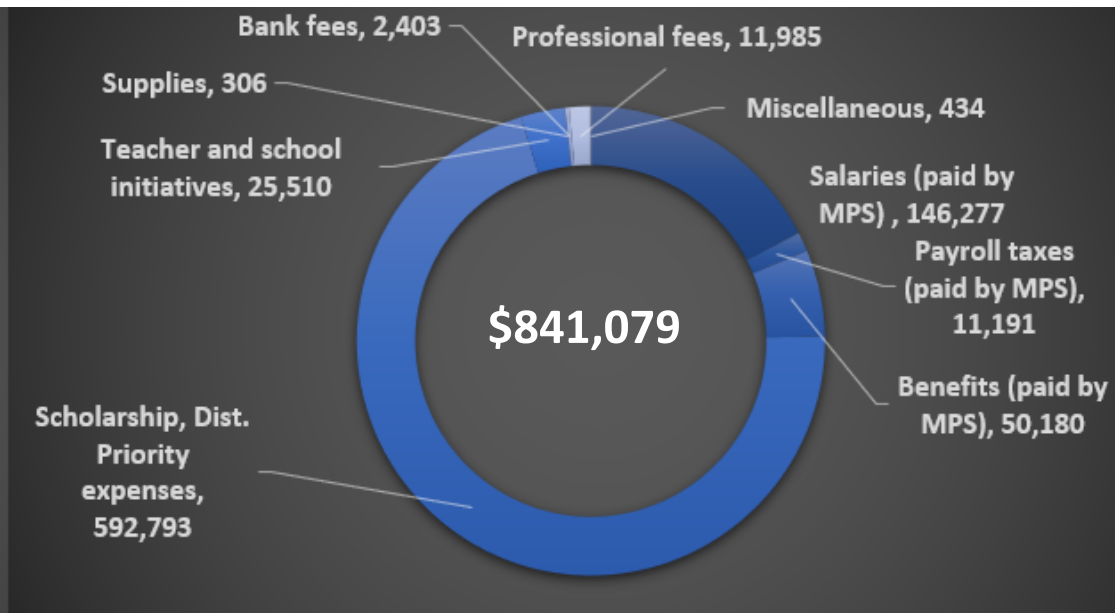
In order to meet these goals, we will need the support of many organizations, businesses, and individuals. If you have an interest in helping us achieve these goals, please visit our website and learn more about how you can help. From Board membership to volunteer committee service, there are many ways that you can make a difference in the lives of Mapleton kids. We hope that you will join us as we proudly continue to support our Mapleton community.

FINANCIAL HIGHLIGHTS

REVENUE & SUPPORT



EXPENSES



Change in Net Assets.....	-\$134,143
Net Assets, July 1, 2020.....	\$281,168
Net Assets, June 30, 2021.....	\$147,025

FINANCIALS



Mapleton Education Foundation Statement of Financial Position As of June 30, 2022

Assets	
Cash&CashEquivalents.....	\$661,157
Promise to give.....	\$375,157
Prepaid expenses.....	\$2,600.00
Total Assets	\$1,038,914

Liabilities	
Scholarships payable.....	\$886,408
Accounts payable.....	\$5,481
Total Liabilities	\$, 91,889

Net Assets	
Without donor restrictions.....	\$23,352
With donor restrictions.....	\$123,673
Total Net Assets	\$147,025

Total Liabilities and Net Assets \$ 1,038,914

DONORS

Gala Donors

A Cake Occasion
Academy High School Staff
Adventure Elementary Staff
Arvada Center for the Arts and Humanities
Balistreri Winery
Bandimere Speedway
Barbara Vallejos
Beth Yohe and Michael Savage
Blaster Bouncer Jumping Castles, Inc.
Boondocks Food & Fun
Boulder Philharmonic Orchestra
Brewery Rickoli Ltd.
Buffalo Run Golf Course
CareerX Staff
Charlotte Ciancio
Cherry Creek Shopping Center
Chuck Rasco
City of Thornton
Clayton Partnership School Staff
Comedy Works
Crimson & Gold Tavern
Dave and Buster's
Denver Firefighter's Museum
Denver Skin Aesthetics
Denver Zoo
Diana Blumenschein
Donna Clifford
Dwayne Schmidt and Don Herman
Eldorado Natural Spring Water
Emily Piper Allen
Enstrom Candies
Esmeralda Loera
Explore Elementary Staff
Fogo de Chão Churrascaria
Four Mile Historic Park

Gabriel Aragon
Global Campus Staff
Golf Westminster
Hans Vonderhofen
History Colorado Center
Jennifer Zavada
Jumpstreet Indoor Trampoline Park
Kendra Scott
Kristen Morel
Leni and Dave Sauer
Lesha and Tim Van Binsbergen
Loveland Ski Area
Lori Penwell
Luna Gourmet Coffee & Tea/Boyer's Coffee
Lynn and Mark Cirbo
Lynn Setzer
Maggiano's
Mapleton Expeditionary School of the Arts Staff
Mapleton Public Schools Business Services Staff
Mapleton Public Schools Central Administrative Staff
Maria Gonzalez
Martha Geonetta
McNeil Designer Portraits
Meadow Community School Michael Miller
Mitch Sauer
Monterey Community School Staff
Nancy and Wil Harrington
Natalie Scarpella
New England Aquarium
North Valley School for Young Adults Staff
Performing Arts Staff
Pilates Plus
Sam's Club

Sarah and Nate Bucar
Sheriff McIntosh /Adams County Police Department
Skyview Campus
Spavia Bradburn
Special Services Staff
Spotlight Colorado Photography Steve
Susan Gerhart
Tattered Cover Book Store
Terri Stowall
The Butterfly Pavilion
The Denver Brass
The Egg & I
The Keg Steakhouse & Bar
The Robert & Judi Newman
Center for the Performing Arts, University of Denver
The Westin Westminster
Therese Brown
Thomas Hernandez
Toni Booth
University of Denver
Unser Karting and Events
Welby Community School Staff
White Fence Farm
Wild Women Wine
Wines for Humanity
Work & Class
York International Staff

Mapleton Employee Donors

Marisa Abreo
Jamie Adams
Kimberly Adams
Lisa Aguado
Loucinda A'Hearn
Olivia Albery
Karla Allenbach
Julie Alvarado

Jennifer Anderson
Michell Ansley
Kara Arany
Molly Asaro
Morgan Athey
Omar Avila-Montanez
Elena Baca
Kathryn Baines Patton
Katie Bakanec
Milam Baker
Taylor Bankston
Brian Barringer
Regina Barros
Julie Barton
Margaret Bell
Dianne Bennett
Melissa Berry
Justine Bickford
Justin Bise
Jennifer Bjoin
Shannon Black
Cody Blackburn
Karen Blair
Allison Blankenship
Kaylee Blevins
Annaleah Bloom
Hannah Bloom
Robert Boaz
Catherine Bock
Jilian Bolton
Antoniette Booth
Kate Booth Amber
Bornemeier
Debra Braa
Zachary Brake
Emily Branca
Erica Branscum
Kiri Brenner
Damon Brown
Alexander Buck
Nicole Bunck
Eleanor Burns
Jayna Burtner
Maria Buteyn
Lois Byerly



DONORS

Ann Cacciatore
Christopher Cain
Victoria Capobianco
Hannah Cardenas
Quinn Carney
Delia Carrillo
Josie Carrillo
Kammie Carrillo
Allison Casillo
Amalia Castaneda
Sean Chadwick
Jennifer Chaplin
Alyshia Chapman
Cecilia Chavez
Charlotte Ciano
Chelsea Clark
Margaret Cobbins
David Coleman
Juliet Comer
Magdalena Concha
Angela Connelly
Margaret Cooke
Rachel Coppinger
Betty Cortez
David Cortez
Lori Couillard
Michael Crawford
Melanie Crow
Wiley Cruse
Mark Davidson
Kathryn De Losh
Bryan Decker
Megan Decker
Meghan Dekam
Jennifer Denileon
Rachel Dickson
Corey Dickter
Nicole Dipaolo
Lori Domenico
Katherine Drake
Karen Duckworth
Jason Duran
Kari Dusenbery
Tyler Eaton
Angela Edmundson
Sarah Eichert
Deborah Engle
Alexander Epps
Samantha Erb

Andrea Ernst
Emily Estes
Alvaro Estrada
Jacqueline Ewing
Brandon Fagley
Emily Fiola
Ryan Fiore
Sharon Forbes
Tamara Frawley
Phyllis Frazier
Rebecca Frye
Kelli Frykholm
Brian Fuller
Jill Fuller
Lisa Furlong
Sarah Furlong-Kopperud
Ryan Fuss
Paula Gallegos
Alice Garrison
Cheryl Gerde
Susan Gerhart
Jacob Germanoski
Ronna Gerst
Francesca Giusti
Ashlee Goetz
Jenessa Gonzales
Mary Gonzales
Mica Gonzales
Eva Gonzalez De Marquez
Aurora Gonzalez
Maria Gonzalez
Heather Gorey
Robin Graham
Lara Grant-Waggle
Heather Gray
Brandi Greenbaum
Linda Greenwald Blaustein
Arcelia Griego
Jason Gustafson
Beronica Gutierrez
Rosaura Gutierrez
William Haan
Steven Hackenberg C
ourtenay Hammond
Lauren Hamner
Maria Hamulic
Alisa Hansen
Rhonda Harkless-Rivera
Hannah Harsin Drager

Julianne Hazah
Curtis Heimbeck
Madalaine Heiser
Haley Henseler
Xong Her
Donald Hergenreter
Annette Hernandez
Gabriella Hernandez
Myda Hernandez
Sandra Herrera
Joshua Hirsch
Ann Hodge
Lisa Hollingsworth
Jennifer Horst
Elyse Houck
Alicia Howard
Natalie Huff
Brianna Huffman
Lindsay Hull
Cayley Hundt
Angela Iafrate
Connie Io
Kortnie Jacks Ketler
David Janak
Sandra Jensen
Rebecca Jessie
Kelly Jiron
Kelly Johnson
Mavis Johnson
Melissa Johnson
Monica Johnson
Zachary Johnson
Kathleen Keelan
Kristy Keithline
Alexzander Kelly
Allyson Kelly
Sara Kitchen
Cory Klimper
Beverly Knappe
Benjamin Knopf
William Koch
Karla Kohman
Melissa Kretzmann
Kristi Evans
Joshua Kroonenberg
Jason Kunk
Crystal Landin
Karen Lane

Courtney Lang Ranellelang
Brenda Lara
Janel Lawson
Epemineo Leblanc
James Lefebvre
Jennifer Legault
Veronica Leon Madrigal
Cynthia Lewis
Arleeta Lisman
Jessica Lloyd
Esmeralda Loera
Amanda Logan
Chynna Lucas
Zachary Lucas
Diana Lujan
Maria Luna
Jennifer Luscombe
Peggy Maldonado
Candice Manseau
Sara Marchi
Celina Marrujo
Kimberly Martin
Carolmartinez Davis
Ashley Martinez
Joann Martinez
Joyce Martinez
Jozette Martinez
Randi Martinez
Teresa Martinez
Jessie Massey
Melissa Mckenny
Julia Mcwhite
Manuela Medina
Stephanie Menk Cordova
Katelyn Merchat
Benjamin Metropulos
Michelle Barott-Jackson
Laura Milani
Cheryl Miller
Michelle Minard
Lindzy Molinaro
Amy Moore
Kristen Morel
Sean Moses
Kimberly Mottel
Melodie Mull
Sandra Munoz
Amanda Murphy
Mary Murphy

Crystal Navarette
Laura Nelson
Judith Neuman-Lee
Tia Nevil
Michelle Norton
Michelle Olivas
Jennifer Olsen
Realene Olson
Leon Ott
Suzanne Ott Emilyottinger
Cody Owston
Amanda Pacheco
Emelina Page
Michael Page
Sergio Panelo
Susan Panozzo
David Penny
Lori Penwell
Janelle Pepple
Angela Perry
Lisa Peterson
Mellissa Pfaff
Ashley Phelps
Maggie Phipps
Loraine Pick
Breanna Pierluissi
Emily Piper-Allen
Jared Powell
Molly Prince
Natalie Ptaszynski
Guadalupe Quezada
Maria Ramirez
Monica Ramirez
Aurora Rangel
Shiba Rashiq
Rachel Rea
Danielle Reffel
Andrew Richmond
Evelyn Ripsom
Gena Rivera
Jennifer Rivera
Rhonda Rivera-Harkless
Abbigayle Roberts
Erika Robles
Tracy Rodgers
Luz Rodriguez
Kristie Romero
Raylene Romero
Monica Romo

Rhonda Ronczka
Noelle Roni Gebre-Mariam
Melanie Rufien
Aaron Rugg
Kaye Rush Maureenruss
Bradley Russell
Cathy Russell
Alex Ryckman
Jennifer Ryszkowski
John Salmeron
Alba Sanchez
Mike Sanchez
Amanda Sanford
David Sauer
Michelle Sauer
Mitchell Sauer
Janna Scarpella-Straub
Beth Schamp
Lori Schellin
Elizabeth Schmidt
Benjamin Schneider
Stephanie Schupbach
Brianna Schwab
Nicole Seaman
Mary Searing
Joni Seaward
Karli Shackelford
Brie Shoemaker
Jessica Short
Caroline Siegel
Lori Skul
Cynthia Smith
Jordan Smith
Margaret Snell
Ruth Soto
Kelley Spencer
Daniel Spitzer
Alyssa Stanek
Timothy Stemper
Katherine Stirling
Allison Stockman
Jarom Stoddard
Jeannine Stout
Emily Stover
Julie Straface
Mallory Sullivan
Therese Swan
John Syron

Lucas Taylor
Valerie Thill
Shirley Thompson
Brandi Thorman
Victoria Torres
Brandi Thorman
Victoria Torres
Brian Touher
Lindsay Tozer
Stefanie Trenchik
Emily Tucker
Ronald Tupa
Kristin Tyus
Juan Urbina
Tahnee Usher
Megan Vahling
Cynthia Valdez
Barbara Vallejos
Eriksen Van Etten
Chelsea Van Name
Zachary Van Sant
Francine Vigil
Rhonda Vigil
Vanessa Vigil
Chua Vue
Maisee Vue
Stephanie Walker
Nicola Walsh
Tanya Ward
Sandra Warden
Patrick Weir
Laurie Weitzel
Erica Wernsmann
Angela Wessel
Jackson Westenskow
Melissa Weyer
Tashawilcke-Klein
Veronica Wilder
Jane Wilson
Hannah Winters
Mary Wooten
Lindsey Wrege
Dana Young
Sara Zaleski
Sharon Zeman
Jeanine Zinner

With Special Gratitude to our Partners

In 2020-2021 we were proud to have continued major donor support from the following companies and organizations:

NEENAN
ARCHISTRUCTION®



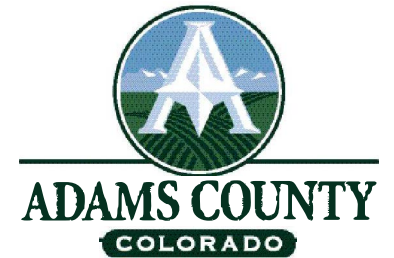
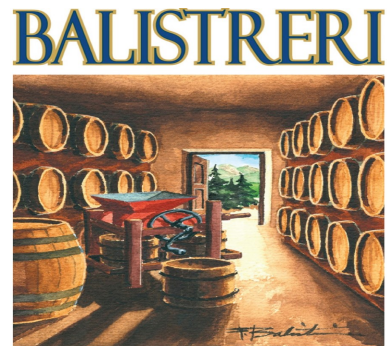
JHL
CONSTRUCTORS
BUILDING COLORADO'S FUTURE



NV5



With Special Gratitude to our Partners

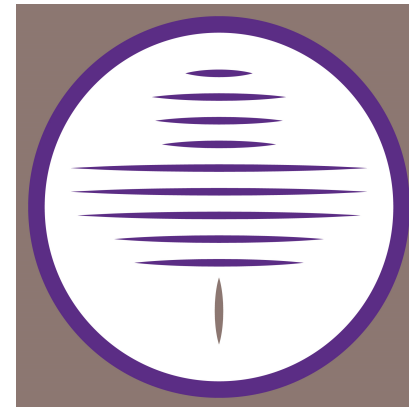


LEADERSHIP



BOARD OF DIRECTORS

Phyllis Berti, Community Leader
Antoniette Booth, Mapleton Public Schools
Nathan Bucar, Cage Bucar Lewis
Jayna Burtner, Mapleton Public Schools (Secretary)
Charlotte Ciano, Mapleton Public Schools Superintendent (Treasurer)
Carl Cooney, Office of Veteran Affairs
Acaia Fante, Guild Education
Michael Hanson, North Suburban Medical Center
Thomas Hernandez, MSU Denver (President)
Michael Miller, Community Leader
Thomas Moe, Board of Education Representative
Dave Sauer, Mapleton Public Schools (Vice President)
Hans Vonderhofen, Split Rail Fence Company
Beth Yohe, The Conflict Center



GALA 2021

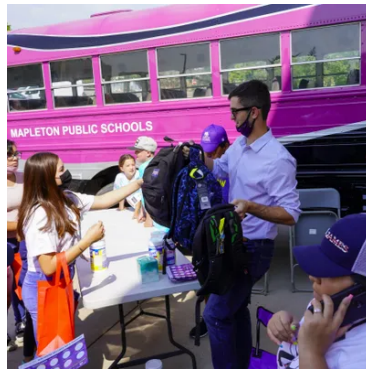


On Friday, October 1, 2021, the Mapleton community joined together in celebration of the Mapleton Education Foundation's **17th annual gala**. Since its founding in 1992, the Foundation has played a key role in the success of Mapleton's small-by-design schools of choice. The Foundation has also helped over 600 students achieve their dreams of going to college. This year's gala **raised funds to ensure that every elementary school will have an Imagination Playground set so that each student has access to greater curiosity and imaginative play in learning.** The remaining funds will be used to support the Foundation's, teacher innovation grants and scholarship programs. Thank you to Neenan, our presenting sponsor of the evening.

NEENAN
ARCHISTRUCTION®



5th Annual Wolverine Welcome Back



WOLVERINE WELCOME BACK

OPPORTUNITIES *BEYOND* YOUR IMAGINATION!

Imagine the possibilities in Mapleton at
our Welcome Back-to-School event!

Friday, August 6, 2021 | 10 a.m. – 12 p.m.

Skyview Campus, 8990 York St, Thornton, CO 80229



For more information call 303.853.1000 | For a full list of partners, visit www.mapleton.us.

On Friday 6, 2021 we hosted our fifth annual Wolverine Welcome Back Event. Eight hundred backpacks stuffed with school supplies were distributed. Thanks to our partners at A Precious Child, who provide children in need with opportunities and resources to empower them to achieve their full potential. This event included valuable back-to-school resources to help learners imagine the possibilities in Mapleton! Teachers, staff, and administrators were all on hand to support our students and take part in this community event.



WE NEED YOUR SUPPORT

Ways to give:

Donate Online:
at mapletoneducationfoundation.org, click on "donate"

Mail a check to:
Mapleton Education Foundation
6951 Fow Way, Denver, CO 80221

- Support:**
- A named scholarship fund
 - Teacher grants
 - Student Programs
 - Let us decide where it's most needed!

Join us!

Each year in September, we host a large annual gala with a live and silent auction, community spirit and lots of inspiration. Proceeds from the event fund all of our student and teacher programs.

Spread the word:

Follow us, like us and of course, tell your friends!


@MapletonEducationFoundation



For more information, please contact:

mef@mapleton.us



 **MAPLETON**
EDUCATION FOUNDATION
The path to great starts here.

Updated October 27, 2022